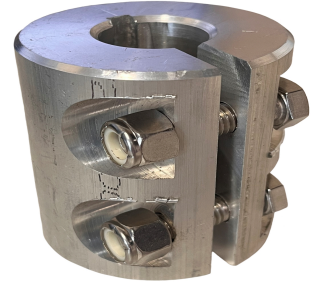


# Tire Brush Aluminum Coupling

**Part Number:** P-TB-212

**Description:**

**Price:** \$85.6



## Detailed Description

This coupling is used to hold the Tire Brush Shaft from the brush to the motor in the wash tunnel. This coupling has four 3/8" holes with two screws and bolts. Both screws that are included are 3/4" long and 3/8" in diameter. The coupling has an inside diameter of 1" and an outside diameter of 2-1/2". This coupling is made of aluminum to ensure corrosion resistance. If a replacement key way is needed P-SE-2034 is the correct size needed.

## Specifications

- Inside Diameter: 1"
- Outside Diameter: 2-1/2"
- Screw Lengths: 3/4"
- Screw Diameter: 3/8"
- Material: Aluminum
- Dimensions: 2-7/8" X 2-1/2" X 2-7/8"